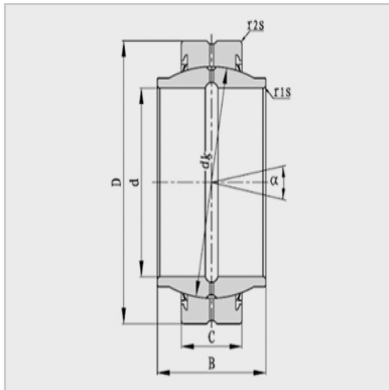
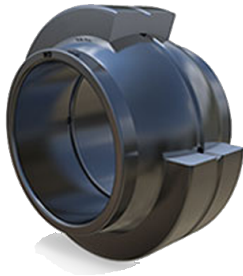


Spherical plain bearing



model : GE80HO-2RS

Main dimensions (mm) :

d :	80
d2 (min) :	90
D :	120
B :	74
C :	45
dk :	105
r1s (min) :	0.3
r2s (min) :	1
° :	3

Rated load (KN) :

Cr :	400
Cor :	2000
Weight (kg) :	2.4

: